

\$594,900 - 253 Waterford Way, Chestermere

MLS® #A2208242

\$594,900

3 Bedroom, 3.00 Bathroom, 1,571 sqft
Residential on 0.07 Acres

NONE, Chestermere, Alberta

UNDER CONSTRUCTION: 4-6 months to completionWelcome to this beautifully designed, pre-construction home that offers both luxury and functionality. Featuring a spacious front-attached garage, this home is packed with high-end upgrades throughout, ensuring comfort and style at every turn.

Key Features Include:

Expansive 9 ft ceilings that create a bright and open atmosphere, making the home feel even larger and more inviting.

Quartz countertops in the kitchen and bathrooms, offering durability and elegance for years to come.

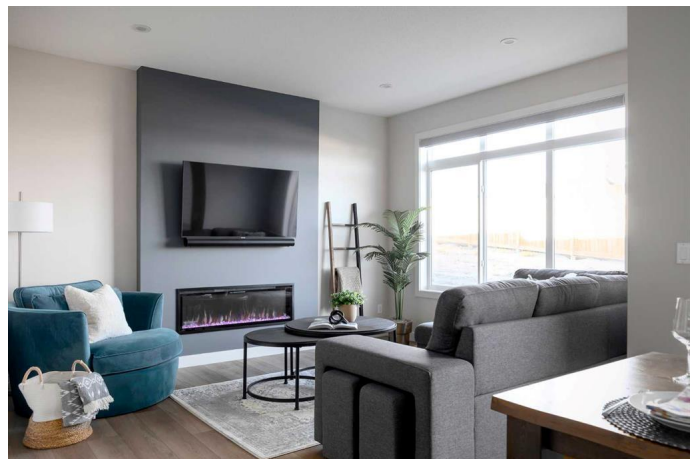
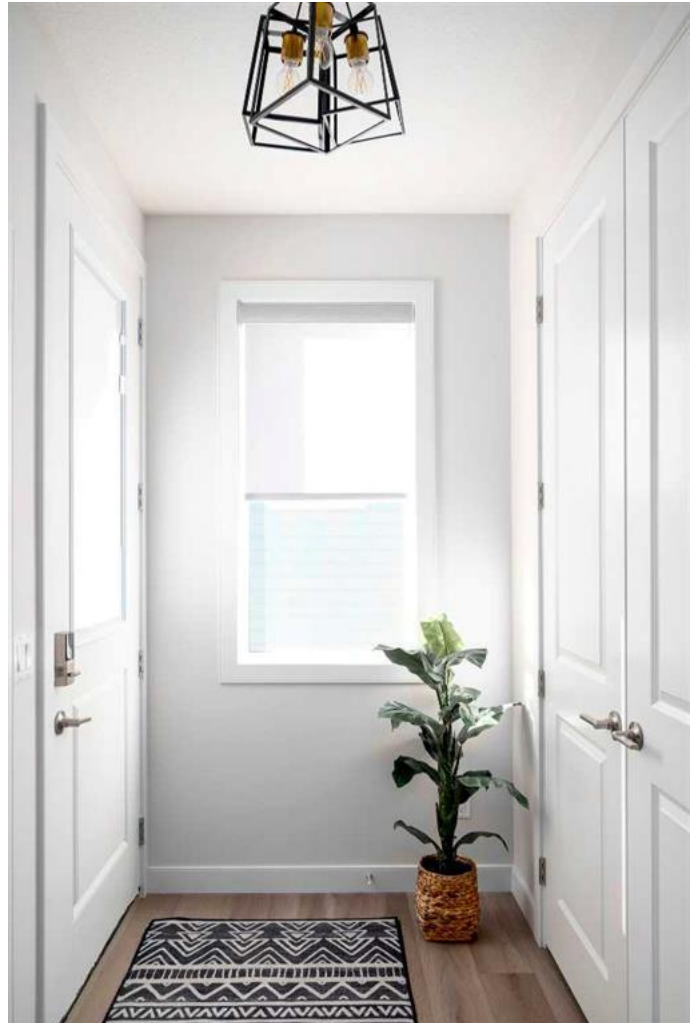
Soft-close cabinetry in the kitchen and bathrooms, adding a touch of sophistication and ensuring quiet, effortless use.

Undermount sinks in the kitchen and bathrooms for a sleek, modern look.

8 ft doors that enhance the home's elegant appeal and provide a sense of grandeur.

A luxurious dual vanity ensuite, complete with a full tile shower—the perfect space for relaxation and rejuvenation.

This home is also ideally situated close to a playground, making it an excellent choice for families. Additionally, it features a side entrance, providing convenient access and adding flexibility to the layout.



Note: Please be advised that the front elevation and interior photos shown are of the same model for illustration purposes only. The actual home's style, interior colors, and finishes may vary. Call Today!

Built in 2025

Essential Information

| | |
|----------------|------------------------|
| MLS® # | A2208242 |
| Price | \$594,900 |
| Bedrooms | 3 |
| Bathrooms | 3.00 |
| Full Baths | 2 |
| Half Baths | 1 |
| Square Footage | 1,571 |
| Acres | 0.07 |
| Year Built | 2025 |
| Type | Residential |
| Sub-Type | Semi Detached |
| Style | 2 Storey, Side by Side |
| Status | Active |

Community Information

| | |
|-------------|-------------------|
| Address | 253 Waterford Way |
| Subdivision | NONE |
| City | Chestermere |
| County | Chestermere |
| Province | Alberta |
| Postal Code | T1X 2Z9 |

Amenities

| | |
|----------------|------------------------|
| Parking Spaces | 2 |
| Parking | Double Garage Attached |
| # of Garages | 2 |

Interior

| | |
|-------------------|--|
| Interior Features | Double Vanity, High Ceilings, Kitchen Island, Quartz Counters, Separate Entrance |
|-------------------|--|

| | |
|-----------------|-------------------------------|
| Appliances | Dishwasher, Electric Stove, M |
| Heating | Forced Air |
| Cooling | None |
| Fireplace | Yes |
| # of Fireplaces | 1 |
| Fireplaces | Electric |
| Has Basement | Yes |
| Basement | Full, Unfinished |

Exterior

| | |
|-------------------|--------------------------------|
| Exterior Features | None |
| Lot Description | City Lot, Level, Rectangular L |
| Roof | Asphalt Shingle |
| Construction | Mixed, Vinyl Siding |
| Foundation | Poured Concrete |

Additional Information

| | |
|----------------|-----------------|
| Date Listed | April 3rd, 2025 |
| Days on Market | 42 |
| Zoning | R-3 |

Listing Details

| | |
|----------------|--------------------|
| Listing Office | First Place Realty |
|----------------|--------------------|

Data is supplied by Pillar 9â„¢ MLSÂ® System. Pillar 9â„¢ is the owner of the copyright in its MLSÂ® System. Data is deemed reliable but is not guaranteed accurate by Pillar 9â„¢. The trademarks MLSÂ®, Multiple Listing ServiceÂ® and the associated logos are owned by The Canadian Real Estate Association (CREA) and identify the quality of services provided by real estate professionals who are members of CREA. Used under license.

