

# \$88,200 - Lot 1 Mountain Springs, Rural Woodlands County

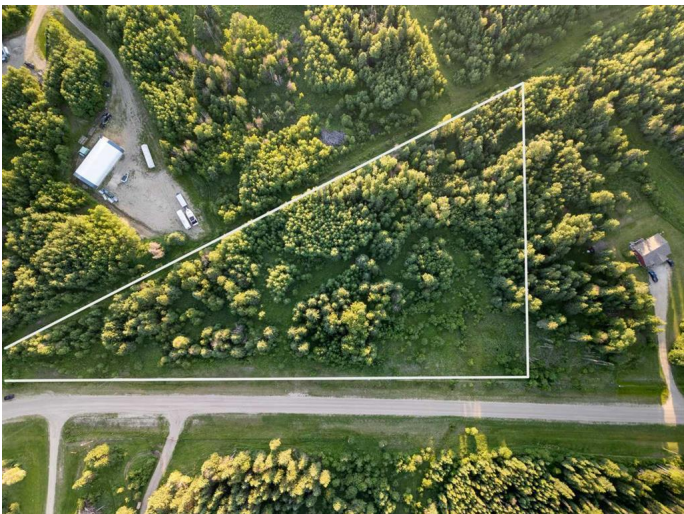
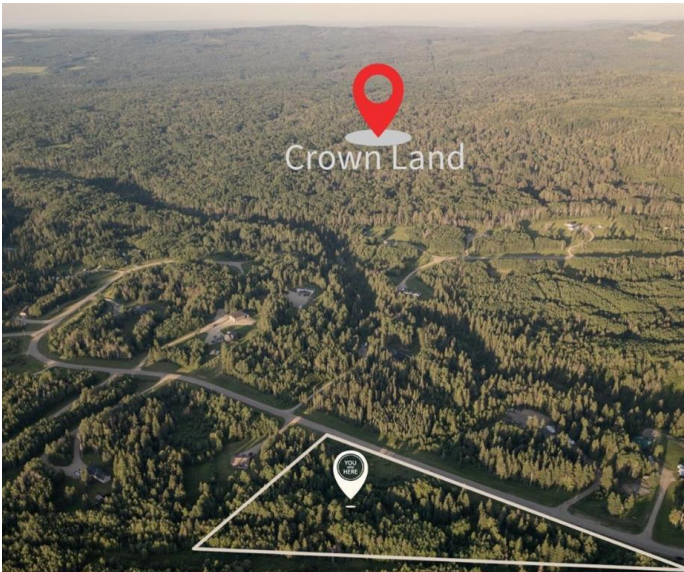
MLS® #A2204832

**\$88,200**

0 Bedroom, 0.00 Bathroom,  
Land on 5.58 Acres

NONE, Rural Woodlands County, Alberta

Welcome to your canvas of opportunity! This remarkable 5.58-acre lot beckons you to envision the home of your dreams. Tucked away near Whitecourt, this property offers a perfect blend of privacy and natural beauty. Surrounded by lush, mature trees. For the outdoor enthusiast, endless adventures await with nearby trails catering to hikers, bikers, and nature lovers alike. Plus, with convenient access to crown land in the surrounding area, the possibilities for exploration are boundless. But that's not all – this property comes with the added convenience of well servicing options. The seller is prepared to provide water connections at an additional cost, ensuring that your dream home can become a reality with ease. Seize the opportunity to create your own haven amidst this picturesque landscape.



## Essential Information

MLS® #	A2204832
Price	\$88,200
Bathrooms	0.00
Acres	5.58
Type	Land
Sub-Type	Residential Land
Status	Active

## Community Information

Address	Lot 1 Mountain Springs
Subdivision	NONE
City	Rural Woodlands County
County	Woodlands County
Province	Alberta
Postal Code	T7S 1N9

### **Amenities**

Utilities	Electricity at Lot Line, Natural Gas at Lot Line
-----------	--

### **Additional Information**

Date Listed	March 22nd, 2025
Days on Market	126
Zoning	CR

### **Listing Details**

Listing Office	RE/MAX ADVANTAGE (WHITECOURT)
----------------	-------------------------------

Data is supplied by Pillar 9â„¢ MLS® System. Pillar 9â„¢ is the owner of the copyright in its MLS® System. Data is deemed reliable but is not guaranteed accurate by Pillar 9â„¢. The trademarks MLS®, Multiple Listing Service® and the associated logos are owned by The Canadian Real Estate Association (CREA) and identify the quality of services provided by real estate professionals who are members of CREA. Used under license.