

\$259,900 - 150, 1623 Centre Street Nw, Calgary

MLS® #A2204377

\$259,900

0 Bedroom, 0.00 Bathroom,
Commercial on 0.00 Acres

Crescent Heights, Calgary, Alberta

Prime Retail Space Available at Central Landmark Mall! This high-traffic corner unit is located on the main floor, by the main entrance, elevators, and stairs, ensuring maximum and exceptional exposure for your business. Easy to customize and renovate to suit your business needs. The mall boasts a solid mix of long-time tenants, including established and popular: restaurant, grocery store, bakery and other diverse retail outlets. Conveniently located with ample parking, the property is just steps away from public transit, offering easy access to Downtown and major roadways. Don't miss this opportunity, start your business today in a thriving, well-established location!

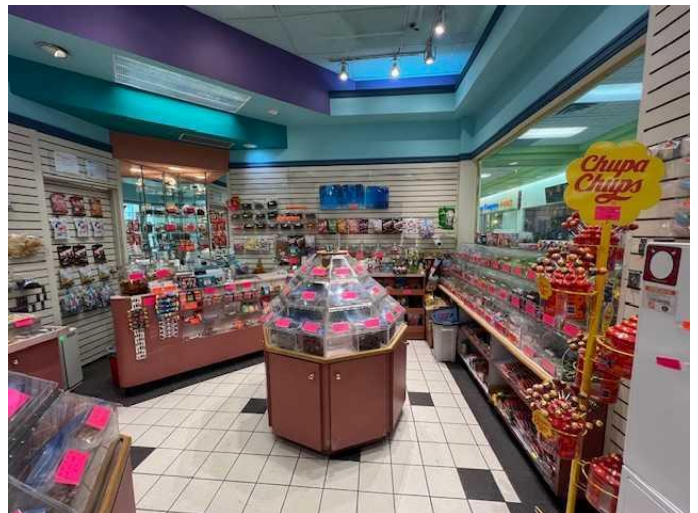
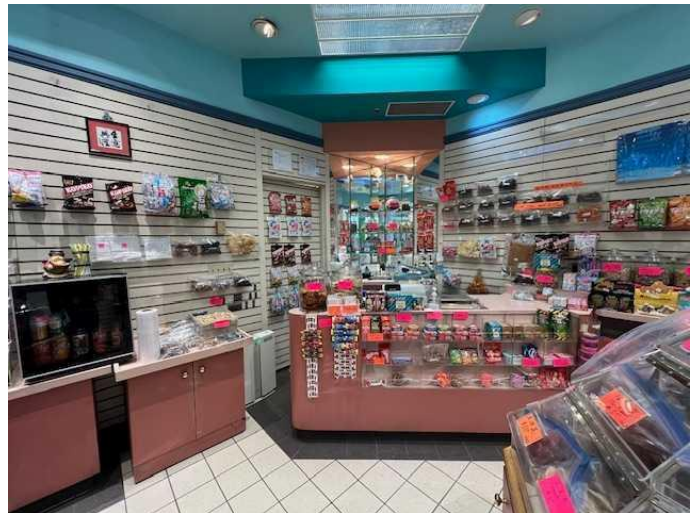
Built in 1997

Essential Information

| | |
|------------|------------|
| MLS® # | A2204377 |
| Price | \$259,900 |
| Bathrooms | 0.00 |
| Acres | 0.00 |
| Year Built | 1997 |
| Type | Commercial |
| Sub-Type | Business |
| Status | Active |

Community Information

Address 150, 1623 Centre Street Nw



| | |
|-------------|------------------|
| Subdivision | Crescent Heights |
| City | Calgary |
| County | Calgary |
| Province | Alberta |
| Postal Code | T2E 8S7 |

Additional Information

| | |
|----------------|------------------|
| Date Listed | March 20th, 2025 |
| Days on Market | 142 |
| Zoning | C-COR1 |

Listing Details

| | |
|----------------|-------------------------|
| Listing Office | Century 21 Bravo Realty |
|----------------|-------------------------|

Data is supplied by Pillar 9â„¢ MLS® System. Pillar 9â„¢ is the owner of the copyright in its MLS® System. Data is deemed reliable but is not guaranteed accurate by Pillar 9â„¢. The trademarks MLS®, Multiple Listing Service® and the associated logos are owned by The Canadian Real Estate Association (CREA) and identify the quality of services provided by real estate professionals who are members of CREA. Used under license.