

\$18,900 - 5 Park Ave (48 Ave), Mayerthorpe

MLS® #A2193933

\$18,900

0 Bedroom, 0.00 Bathroom,
Land on 0.37 Acres

NONE, Mayerthorpe, Alberta

Build on a new street with a park out your front window! This is the largest lot on the street! Lots are priced great and offer a well thought out new development in Mayerthorpe. The Park Avenue Playground and Outdoor Fitness Facility is just across the street - such an amazing addition to the value of the lot. This street is zoned for new homes only and there is plenty of room for a garage.

Essential Information

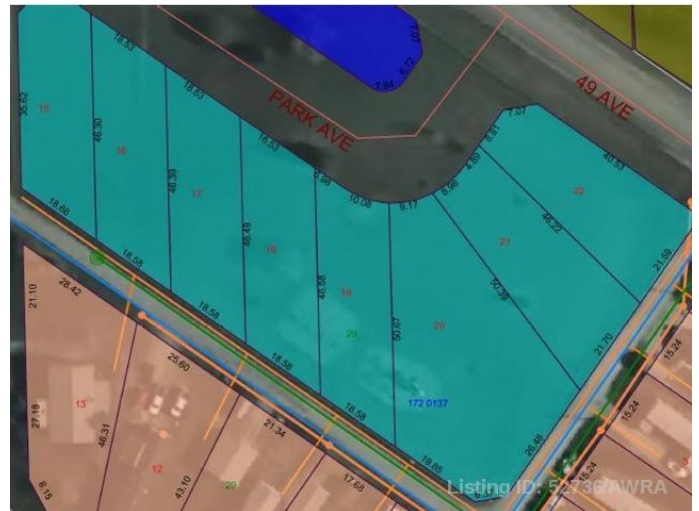
MLS® #	A2193933
Price	\$18,900
Bathrooms	0.00
Acres	0.37
Type	Land
Sub-Type	Residential Land
Status	Active

Community Information

Address	5 Park Ave (48 Ave)
Subdivision	NONE
City	Mayerthorpe
County	Lac Ste. Anne County
Province	Alberta
Postal Code	T0E 1N0

Additional Information

Date Listed	February 10th, 2025
-------------	---------------------



Days on Market 191

Zoning R2

Listing Details

Listing Office RE/MAX ADVANTAGE (WHITECOURT)

Data is supplied by Pillar 9â„¢ MLS® System. Pillar 9â„¢ is the owner of the copyright in its MLS® System. Data is deemed reliable but is not guaranteed accurate by Pillar 9â„¢. The trademarks MLS®, Multiple Listing Service® and the associated logos are owned by The Canadian Real Estate Association (CREA) and identify the quality of services provided by real estate professionals who are members of CREA. Used under license.