

\$12 - 103, 11037 92 Avenue, Grande Prairie

MLS® #A2191580

\$12

0 Bedroom, 0.00 Bathroom,
Commercial on 1.95 Acres

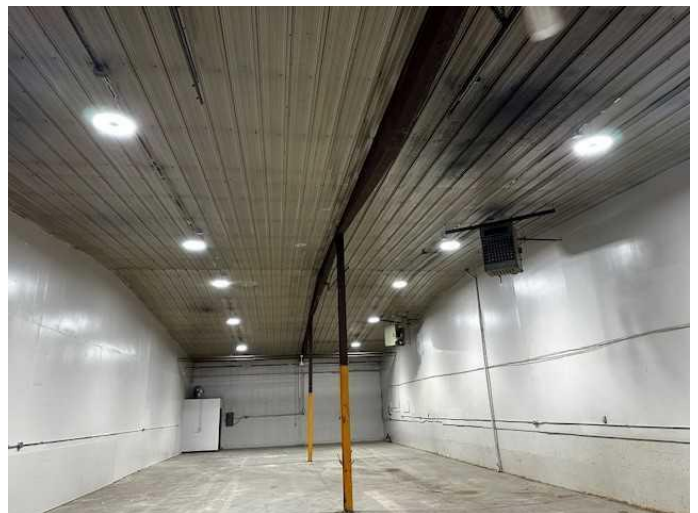
Richmond Industrial Park, Grande Prairie,
Alberta

Total Monthly Payment INCLUDING WATER \$4,078.81 + GST. SHOP FOR LEASE: 3,418 +/- sq. ft. in multi tenant 17,480 total +/- sq. ft. building on 1.95 acres. SHOP: (94'x35' +/-), two (12'x14') electric lift overhead doors, 3 phase electrical 240V, 50/A 250/volt welder outlet. NEW LED lighting, concrete floors, sump, two ceiling fans, 15' clear ceiling height, two overhead unit heaters, taps in shop, 2 piece washroom. PARKING: Proportionate Share. LOCATION: Richmond Industrial Park. ZONING: IG - General Industrial. RENT: \$3,418.00/month + GST (\$12/sq.ft.) 2025 BUDGETED NET COSTS: \$1,230.48/month + GST (\$4.32/sq.ft.) UTILITIES: Gas/Power Tenant pays directly. Water-Included in Net Costs . AVAILABLE: Today! SUPPLEMENTS: Total Monthly Payment, Plot Plan, Floor Plan. To obtain copies of SUPPLEMENTS not visible on this site please contact REALTOR®.

Built in 1975

Essential Information

MLS® #	A2191580
Price	\$12
Bathrooms	0.00
Acres	1.95
Year Built	1975
Type	Commercial



Sub-Type	Industrial
Status	Active

Community Information

Address	103, 11037 92 Avenue
Subdivision	Richmond Industrial Park
City	Grande Prairie
County	Grande Prairie
Province	Alberta
Postal Code	T8V 3J3

Amenities

Utilities	Natural Gas Not Paid, Electricity Not Paid For, Water Paid For
-----------	--

Additional Information

Date Listed	January 31st, 2025
Days on Market	165
Zoning	IG

Listing Details

Listing Office	CommVest Realty Ltd.
----------------	----------------------

Data is supplied by Pillar 9â„¢ MLS® System. Pillar 9â„¢ is the owner of the copyright in its MLS® System. Data is deemed reliable but is not guaranteed accurate by Pillar 9â„¢. The trademarks MLS®, Multiple Listing Service® and the associated logos are owned by The Canadian Real Estate Association (CREA) and identify the quality of services provided by real estate professionals who are members of CREA. Used under license.