

\$245,000 - 412 1 Street, Paradise Hill

MLS® #A2189692

\$245,000

4 Bedroom, 3.00 Bathroom, 1,768 sqft

Residential on 0.20 Acres

NONE, Paradise Hill, Saskatchewan

Welcome to this fully developed 4 level split in Paradise Hill with over 1700 square feet, vaulted ceiling, upgraded kitchen large positively sloped backyard and an abundance of prairie views. Offers Hardwood floors, maple cabinets, stainless steel appliances, double attached garage and a mature landscaped backyard.

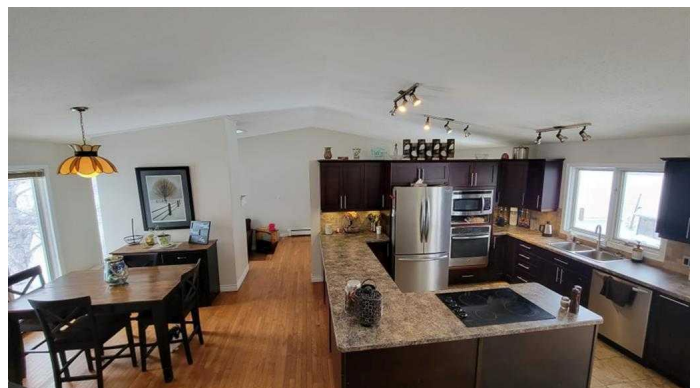
Built in 1979

Essential Information

MLS® #	A2189692
Price	\$245,000
Bedrooms	4
Bathrooms	3.00
Full Baths	3
Square Footage	1,768
Acres	0.20
Year Built	1979
Type	Residential
Sub-Type	Detached
Style	4 Level Split
Status	Active

Community Information

Address	412 1 Street
Subdivision	NONE
City	Paradise Hill
County	Saskatchewan



Province	Saskatchewan
Postal Code	S0M 2G0

Amenities

Parking Spaces	4
Parking	Double Garage Attached
# of Garages	2

Interior

Interior Features	Built-in Features, High Ceilings, Natural Woodwork, Separate Entrance, Storage
Appliances	Built-In Oven, Dishwasher, Dryer, Refrigerator, Washer, Built-In Range
Heating	Boiler
Cooling	None
Fireplace	Yes
# of Fireplaces	2
Fireplaces	Gas
Has Basement	Yes
Basement	Finished, Full, Walk-Up To Grade

Exterior

Exterior Features	Garden, Storage
Lot Description	City Lot, Few Trees, Front Yard, Lawn, Interior Lot, No Neighbours Behind, Landscaped, Treed
Roof	Asphalt Shingle
Construction	Stucco, Wood Frame
Foundation	Wood

Additional Information

Date Listed	January 20th, 2025
Days on Market	98
Zoning	Res

Listing Details

Listing Office	eXp Realty (Lloyd)
----------------	--------------------

Data is supplied by Pillar 9â„¢ MLS® System. Pillar 9â„¢ is the owner of the copyright in its MLS® System. Data is deemed reliable but is not guaranteed accurate by Pillar 9â„¢. The trademarks MLS®, Multiple Listing Service® and the associated logos are owned by The Canadian Real Estate Association (CREA) and identify the quality of services provided by real estate professionals who are members of CREA. Used under license.