

\$375,000 - 1220, 4715 88 Avenue Ne, Calgary

MLS® #A2188093

\$375,000

0 Bedroom, 0.00 Bathroom,
Commercial on 0.03 Acres

Saddle Ridge, Calgary, Alberta

2nd FLOOR OFFICE SPACE available for sale near Saddlepeace Gurdwara, Calgary NE. Potential to generate \$3,200 in gross rental income. Features four dedicated offices and kitchen with an extensive lease improvements worth upto \$150k & 2 business TVs installed in 2 of the rooms for office presentation. The unit is located in a fully leased plaza with a heavy footfall. Measurement comes to 600 sq ft and the property is listed with 10% gross up. Inquire today for more information and to schedule a viewing!

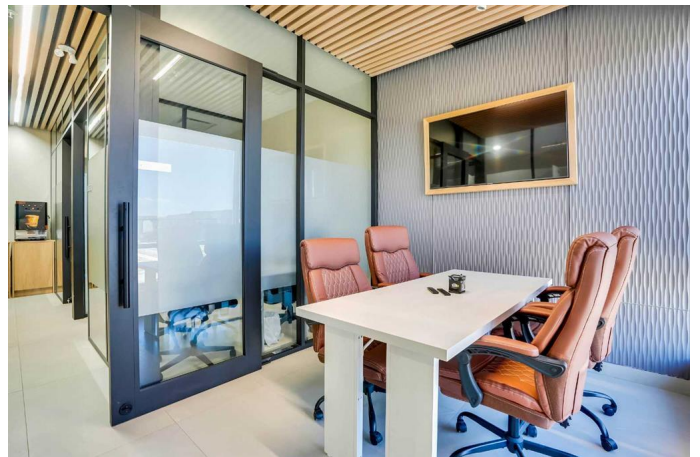
Built in 2021

Essential Information

MLS® #	A2188093
Price	\$375,000
Bathrooms	0.00
Acres	0.03
Year Built	2021
Type	Commercial
Sub-Type	Office
Status	Active

Community Information

Address	1220, 4715 88 Avenue Ne
Subdivision	Saddle Ridge
City	Calgary
County	Calgary
Province	Alberta



Postal Code T3J 5R4

Additional Information

Date Listed January 21st, 2025

Days on Market 210

Zoning C-C1

Listing Details

Listing Office Real Estate Professionals Inc.

Data is supplied by Pillar 9â„¢ MLS® System. Pillar 9â„¢ is the owner of the copyright in its MLS® System. Data is deemed reliable but is not guaranteed accurate by Pillar 9â„¢. The trademarks MLS®, Multiple Listing Service® and the associated logos are owned by The Canadian Real Estate Association (CREA) and identify the quality of services provided by real estate professionals who are members of CREA. Used under license.