

\$1,000,000 - 15, 145051 Township Road 192 S, Rural Newell, County of

MLS® #A2187882

\$1,000,000

0 Bedroom, 0.00 Bathroom,
Commercial on 0.00 Acres

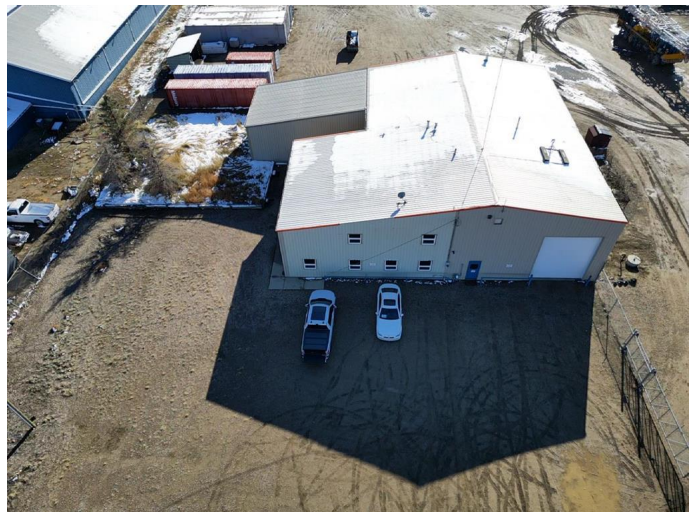
NONE, Rural Newell, County of, Alberta

Two Industrial buildings situated on total 8.17 acres of land in the County of Newell, with easy access to the Trans Canada Highway and within immediacy to the City of Brooks. The main building is made up of metal exterior and has a metal roof. It is roughly 5350 sq ft with an additional 1200 sq ft of cold storage and 1600 sq ft development on the second floor with 650 sq ft of shop mezzanine. This building includes 4 offices, coffee room, large reception and 2 washrooms. The shop has 1 drive through bay and 1 drive in, shop washroom and shop office. The second floor is developed with a large meeting room and an additional office and washroom. The second building is made up of metal exterior and metal roofing as well and is roughly 2400 sq ft with a divider in the centre. The building offers both radiant heat and drainage. Both buildings are on the same fully fenced and gated lot.

Built in 1990

Essential Information

MLS® #	A2187882
Price	\$1,000,000
Bathrooms	0.00
Acres	0.00
Year Built	1990
Type	Commercial



Sub-Type	Industrial
Status	Active

Community Information

Address	15, 145051 Township Road 192 S
Subdivision	NONE
City	Rural Newell, County of
County	Newell, County of
Province	Alberta
Postal Code	T1R1J9

Additional Information

Date Listed	January 15th, 2025
Days on Market	178
Zoning	I-GEN

Listing Details

Listing Office	RE/MAX MEDALTA REAL ESTATE
----------------	----------------------------

Data is supplied by Pillar 9â„¢ MLS® System. Pillar 9â„¢ is the owner of the copyright in its MLS® System. Data is deemed reliable but is not guaranteed accurate by Pillar 9â„¢. The trademarks MLS®, Multiple Listing Service® and the associated logos are owned by The Canadian Real Estate Association (CREA) and identify the quality of services provided by real estate professionals who are members of CREA. Used under license.