

\$429,900 - 8441 102 Avenue, Grande Prairie

MLS® #A2187209

\$429,900

3 Bedroom, 3.00 Bathroom, 1,400 sqft
Residential on 0.12 Acres

Crystal Landing, Grande Prairie, Alberta

Introducing an exciting opportunity to build your dream home in the sought-after Crystal Landing neighborhood! This soon-to-be-built two-story home offers you the chance to select your own finishes and personalize the space to suit your style. With a planned layout that includes an open-concept main floor, a spacious kitchen with ample storage and counter space, and a welcoming foyer, this home is designed for both comfort and functionality. Upstairs, the plan features three bedrooms, including a grand primary suite with a walk-in closet and private ensuite, as well as a conveniently located laundry area. Youâ€™™ also have the flexibility to design the unfinished basement and the option to add a detached double garage. This is your opportunity to create a home that fits your vision from the very start. Contact us today to learn more and start the journey toward building your perfect home!

Built in 2025

Essential Information

| | |
|----------------|-----------|
| MLS® # | A2187209 |
| Price | \$429,900 |
| Bedrooms | 3 |
| Bathrooms | 3.00 |
| Full Baths | 2 |
| Half Baths | 1 |
| Square Footage | 1,400 |



| | |
|------------|-------------|
| Acres | 0.12 |
| Year Built | 2025 |
| Type | Residential |
| Sub-Type | Detached |
| Style | 2 Storey |
| Status | Active |

Community Information

| | |
|-------------|-----------------|
| Address | 8441 102 Avenue |
| Subdivision | Crystal Landing |
| City | Grande Prairie |
| County | Grande Prairie |
| Province | Alberta |
| Postal Code | T8X0S8 |

Amenities

| | |
|----------------|-------------|
| Parking Spaces | 2 |
| Parking | Parking Pad |

Interior

| | |
|-------------------|--|
| Interior Features | Kitchen Island, No Animal Home, No Smoking Home, Open Floorplan, Quartz Counters |
| Appliances | Microwave Hood Fan |
| Heating | Forced Air, Natural Gas |
| Cooling | None |
| Fireplace | Yes |
| # of Fireplaces | 1 |
| Fireplaces | Electric |
| Basement | None |

Exterior

| | |
|-------------------|------------------------|
| Exterior Features | Other |
| Lot Description | Back Yard, City Lot |
| Roof | Asphalt Shingle |
| Construction | Concrete, Vinyl Siding |
| Foundation | Poured Concrete |

Additional Information

| | |
|-------------|--------------------|
| Date Listed | January 10th, 2025 |
|-------------|--------------------|



Days on Market

181

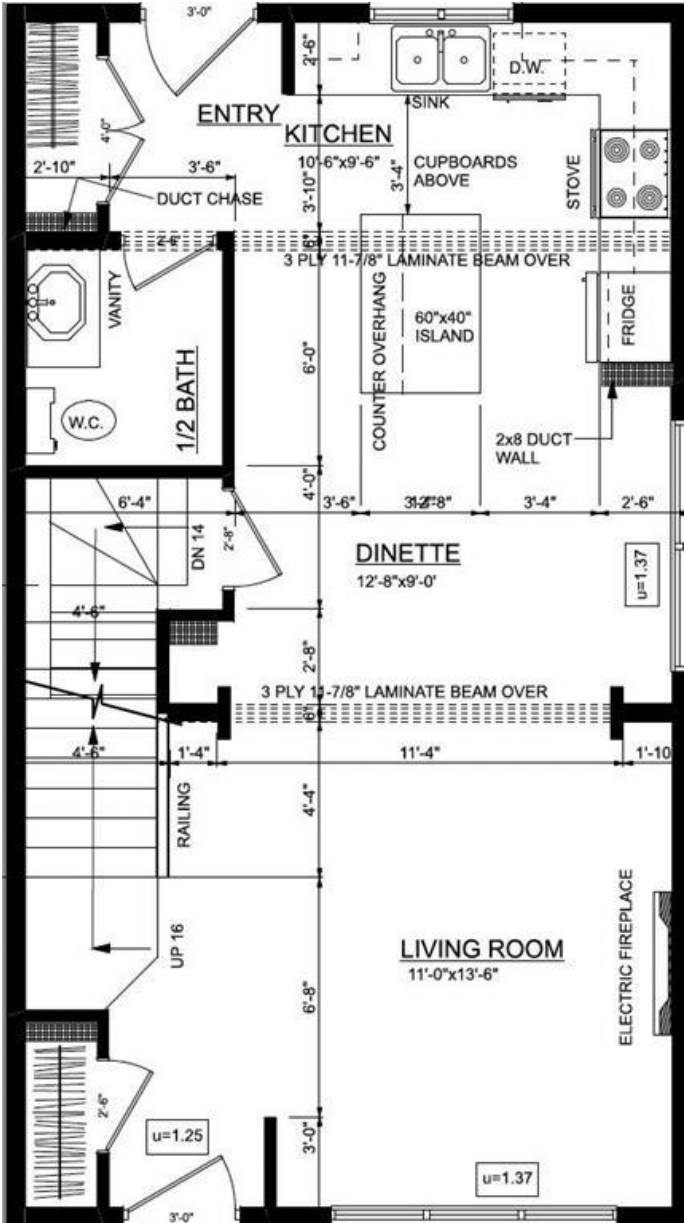
Zoning

RS

Listing Details

Listing Office

RE/MAX Grande Prairie



Data is supplied by Pillar 9â„¢ MLSÂ® System. Pillar 9â„¢ is the owner of the copyright in its MLSÂ® System. Data is deemed reliable but is not guaranteed accurate by Pillar 9â„¢. The trademarks MLSÂ®, Multiple Listing ServiceÂ® and the associated logos are owned by The Canadian Real Estate Association (CREA) and identify the quality of services provided by real estate professionals who are members of CREA. Used under license.