

# **\$379,900 - 423, 1535 Southview Drive Se, Medicine Hat**

MLS® #A2169222

**\$379,900**

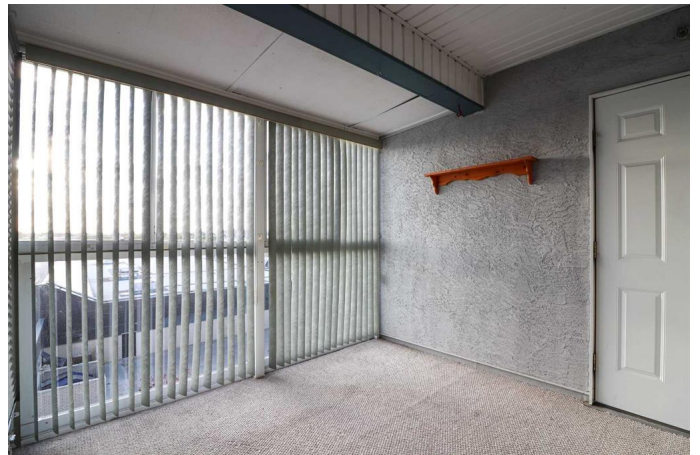
2 Bedroom, 3.00 Bathroom, 1,774 sqft

Residential on 0.00 Acres

Southview-Park Meadows, Medicine Hat, Alberta

Enjoy the lifestyle of a beautiful penthouse condo that is approximately 1800 sq feet with three baths, two levels underground parking with all amenities located in the heart of the city is able offer you. Close to all amenities including parks, golf course and walking paths. This condo unit has newer window coverings (with remote opener), newer fans, two wall air, some newer flooring, new lighting fixtures and new counter top. Extraordinary features like recessed lighting in living room, tons of natural light from gigantic windows and enclosed deck off this level. There is a spacious dining area and breakfast bar, full appliance package, lots of cabinets and access to enclosed deck with additional outside storage. The primary bedroom on this floor will fit a king sized bed. The four piece ensuite has a combined shower tub unit. Walk thru closet from bedroom to ensuite. Along with the roomy entrance there is a 2 piece powder room, under stairs storage and main floor laundry. The upper level features a family room with wet bar and is open to the main level. There is a second bedroom with ensuite and the family room has direct access to bath. The second deck for you to relax on off this level is covered.

Underground parking with extra storage is additional bonus. Building amenities include wheelchair access with special elevator at entrance, pool, hot tub, exercise room, car wash, work shop, library and outside patio areas. Chair lift to second level is an option if



needed! Call your favourite Agent to view this spectacular property and begin your tomorrow..today.

Built in 1995

### **Essential Information**

MLS® #	A2169222
Price	\$379,900
Bedrooms	2
Bathrooms	3.00
Full Baths	2
Half Baths	1
Square Footage	1,774
Acres	0.00
Year Built	1995
Type	Residential
Sub-Type	Apartment
Style	Penthouse
Status	Active

### **Community Information**

Address	423, 1535 Southview Drive Se
Subdivision	Southview-Park Meadows
City	Medicine Hat
County	Medicine Hat
Province	Alberta
Postal Code	T1B4H8

### **Amenities**

Amenities	Car Wash, Elevator(s), Fitness Center, Guest Suite, Indoor Pool, Parking, Party Room, Recreation Room, Secured Parking, Spa/Hot Tub, Snow Removal, Storage, Trash, Visitor Parking, Workshop
Parking Spaces	1
Parking	Concrete Driveway, Heated Garage, Assigned, Garage Door Opener, Underground
# of Garages	1
Has Pool	Yes

### **Interior**

Interior Features	Ceiling Fan(s), Storage, Vinyl Windows, Walk-In Closet(s), Breakfast Bar, Elevator, High Ceilings, Master Downstairs, No Animal Home, No Smoking Home, Recreation Facilities, Soaking Tub, Vaulted Ceiling(s), Wet Bar
Appliances	Dishwasher, Microwave, Refrigerator, Washer/Dryer, Stove(s)
Heating	Baseboard
Cooling	Wall Unit(s)
# of Stories	4

## Exterior

Exterior Features	Courtyard
Roof	Tile
Construction	Stucco, Brick
Foundation	Other

## Additional Information

Date Listed	September 28th, 2024
Days on Market	219
Zoning	R-MD

## Listing Details

Listing Office	ROYAL LEPAGE COMMUNITY REALTY
----------------	-------------------------------

Data is supplied by Pillar 9â„¢ MLSÂ® System. Pillar 9â„¢ is the owner of the copyright in its MLSÂ® System. Data is deemed reliable but is not guaranteed accurate by Pillar 9â„¢. The trademarks MLSÂ®, Multiple Listing ServiceÂ® and the associated logos are owned by The Canadian Real Estate Association (CREA) and identify the quality of services provided by real estate professionals who are members of CREA. Used under license.