

\$15 - 110, 1330 15 Avenue Sw, Calgary

MLS® #A2098905

\$15

0 Bedroom, 0.00 Bathroom,
Commercial on 0.00 Acres

Beltline, Calgary, Alberta

Rare find, 2,808 sq. ft. currently occupied by month to month tenant also vacant units of 745 sq. ft. & 408 sq. ft available now, 2nd Floor Office units within Wellington Square on busy 14 Street SW offered at below market rental rates. Other 2nd floor units , occupied by Month to Month Tenants and available with notice, 1,267 sq. ft., 1,298 sq. ft., 2,808 sq. ft. up to 4,075 sq. ft. contiguous. Double row front parking and 24 stalls in rear. Excellent main floor Tenant mix and built in draw from 12 floor residential condo building on site as well dense surrounding residential development.

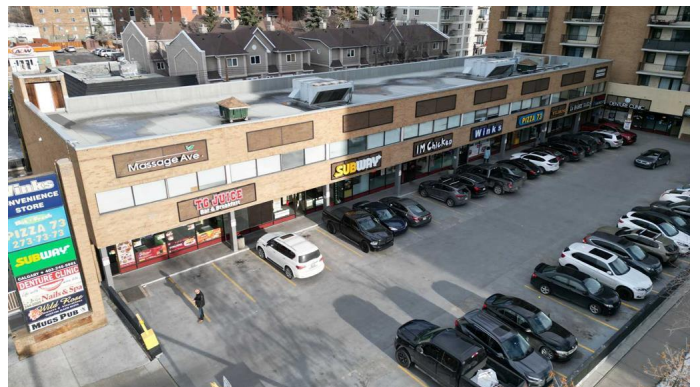
Built in 1973

Essential Information

| | |
|------------|------------|
| MLS® # | A2098905 |
| Price | \$15 |
| Bathrooms | 0.00 |
| Acres | 0.00 |
| Year Built | 1973 |
| Type | Commercial |
| Sub-Type | Retail |
| Status | Active |

Community Information

| | |
|-------------|------------------------|
| Address | 110, 1330 15 Avenue Sw |
| Subdivision | Beltline |
| City | Calgary |
| County | Calgary |



| | |
|-------------|---------|
| Province | Alberta |
| Postal Code | T3C 3N6 |

Amenities

| | |
|----------------|----|
| Parking Spaces | 80 |
|----------------|----|

Additional Information

| | |
|----------------|---------------------------|
| Date Listed | December 28th, 2023 |
| Days on Market | 603 |
| Zoning | CC-COR CENTRE CITY COMMER |

Listing Details

| | |
|----------------|-------------------------------|
| Listing Office | CENTURY 21 BAMBER REALTY LTD. |
|----------------|-------------------------------|

Data is supplied by Pillar 9â„¢ MLS® System. Pillar 9â„¢ is the owner of the copyright in its MLS® System. Data is deemed reliable but is not guaranteed accurate by Pillar 9â„¢. The trademarks MLS®, Multiple Listing Service® and the associated logos are owned by The Canadian Real Estate Association (CREA) and identify the quality of services provided by real estate professionals who are members of CREA. Used under license.